



# Post-16 Curriculum Long Term Planning: Community

## Curriculum Intent

The Post-16 Community curriculum at Chadsgrove School is part of the 'Friends, Relationships and Community' section of the Preparing for Adulthood Framework. The Post-16 Community curriculum covers three key visit areas. These are community facilities, workplaces and next destinations. All pupils in Post-16 have one timetabled day per week out in the community. Community visits aims to prepare pupils for adulthood by:

- Building upon pupils' existing communication, cognition and learning, social, emotional, physical and relationships skills by providing carefully structured ways of further enabling these to be applied in community settings
- Enabling pupils to recognise their value within community settings
- Developing pupils' confidence in their own abilities to access community facilities by communicating with unfamiliar adults and in unfamiliar environments with increasing independence
- Developing pupils' travel awareness and road safety skills within a safe and supportive small group with an appropriate level of adult support

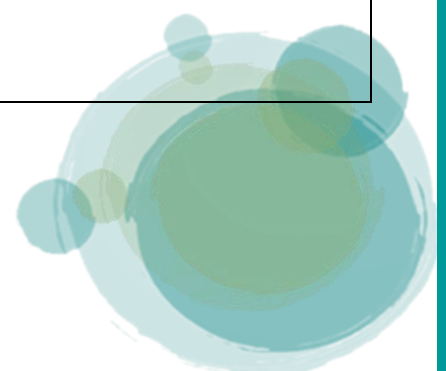
Community facilities may include visits to local towns, shops, leisure centres, parks, cinemas etc. Next destination visits may include visits to local colleges, social care providers and transition visits (Year 14). Workplace visits may include visits to restaurants, factories, offices, shops etc. Where possible, visits will be tailored to pupils' specific needs and aspirations.

Pupils are given directed tasks to complete when in the community and these count towards OCR Life and Living Skills qualifications and/or pupils' individual community work folders. Pupils following the Formal Pathway work towards OCR Life and Living Skills units at Entry Level 2 and 3. Pupils following the Semi-Formal Pathway work towards OCR Life and Living Skills units at Entry Level 1 and 2. Pupils following both Pathways assess community facilities, workplaces and destinations for equality, diversity and inclusion (EDI).

## Curriculum Implementation

Formal Pathway:

<b>Autumn 2024: Travel Training &amp; Community Facilities</b>	<b>Spring 2025: Workplace Visits/EDI</b>	<b>Summer 2025: Next Destination Visits</b>
<p>Travel Training - This aims to equip our pupils with the necessary knowledge and skills to navigate various transportation scenarios safely and confidently.</p> <ul style="list-style-type: none"> <li>• car park safety</li> <li>• efficient boarding procedures</li> <li>• road awareness</li> </ul> <p>M12 Finding your way around an unfamiliar area (E2)</p> <p>M32 Personal safety in the home and community (E3)</p>	<p>N08 Introduction to health and safety at work (E2)</p> <p>N12 Health and safety procedures at work (E3)</p> <p>M26 Introduction to diversity, prejudice and discrimination (E3)</p>	<p>Research and Plan Visits</p> <p>Questions and Answers</p> <p>Mini Tasks</p> <p>Visit Evaluations</p> <p>Transition Support Plan</p>



Semi-Formal Pathway:

<b>Autumn 2024: Travel Training &amp; Community Facilities</b>	<b>Spring 2025: Workplace Visits/EDI</b>	<b>Summer 2025: Next Destination Visits</b>
<p>Travel Training - This aims to equip our pupils with the necessary knowledge and skills to navigate various transportation scenarios safely and confidently.</p> <ul style="list-style-type: none"><li>• car park safety</li><li>• efficient boarding procedures</li><li>• road awareness</li></ul> <p>C6 Travel within the community: going places (E1)</p> <p>M12 Finding your way around an unfamiliar area (E2)</p>	<p>M6 Developing ILS: keeping safe (E1)</p> <p>N08 Introduction to health and safety at work (E2)</p>	<p>Research and Plan Visits Questions and Answers Mini Tasks Visit Evaluations Transition Support Plan</p>

**Curriculum Impact**

Post-16 pupils engage in appropriate, meaningful and personalised community visits. They develop the confidence and ability to participate in, and contribute towards, society and achieve the highest degree of personal independence. Pupils gain evidence to support successful completion OCR Life and Living Skills units and community and transition work folders which help them prepare for their lives after Chadsgrove.

