

THE BIGGER PICTURE

WYRE FOREST



WYRE FOREST KEY INDUSTRIES

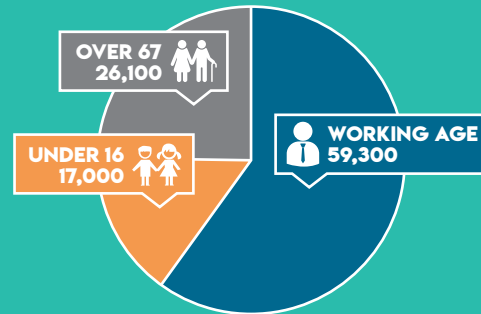
- 1 // **MINING, QUARRYING & UTILITIES**
12.5%
- 2 // **ARTS, ENTERTAINMENT, RECREATION & OTHER SERVICES**
11.1%
- 3 // **EDUCATION**
9.7%
- 4 // **CONSTRUCTION**
9.7%
- 5 // **RETAIL**
6.9%

KEY EMPLOYERS

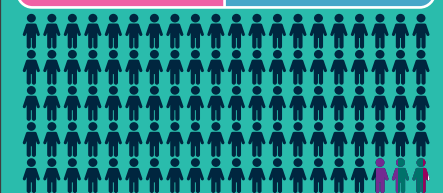
- BRINTONS CARPETS LIMITED
- PHOSTERS
- GEMINI ARC
- MORGAN ADVANCED CERAMICS
- WEST MIDLAND SAFARI PARK LIMITED
- TITAN STEEL WHEELS LIMITED
- SLICKER RECYCLING
- AMADA UNITED KINGDOM LIMITED
- MFG SOLICITORS
- BARTON FIRTOP HOLDINGS (UK) LIMITED
- SEVERN VALLEY RAILWAY (HOLDINGS) PUBLIC LIMITED COMPANY
- NHS

WYRE FOREST KEY INFO

TOTAL POPULATION: 102,400



Female (51.0%) 52,200 Male (49.1%) 50,200



Ethnicity	Percentage
WHITE	95.9%
MIXED/MULTIPLE ETHNIC GROUPS	1.4%
ASIAN / BRITISH ASIAN	1.9%
BLACK / BLACK BRITISH	0.4%
OTHER	0.4%



TOP 10 INDUSTRY SECTORS

