



Chadsgrove Curriculum Long Term Planning: Personal, Social, Health and Citizenship Education, Positive Mental Health and Relationships and Sex Education

Curriculum Intent

At Chadsgrove School, our aims in teaching PSHCE, PMH and RSE include the following:

Key Stage 1 and 2:

- For our pupils to learn about themselves as developing individuals and as members of their communities
- To build upon on their own experiences and on the early learning goals for personal, social and emotional development
- To learn the basic rules and skills for keeping themselves healthy and safe and for behaving well
- To have opportunities to show they can take some responsibility for themselves and their environment
- To begin to learn about their own and other people's feelings and become aware of the views, needs and rights of other children and older people
- As members of a class and school community, to learn social skills such as how to share, take turns, play, help others, resolve simple arguments and resist bullying
- To begin to take an active part in the life of their school and its community

Key Stage 3,4 and 5:

- To learn about themselves as growing and changing individuals with their own experiences and ideas, and as members of their communities
- To become more mature, independent and self-confident
- To learn about the wider world and the interdependence of communities within it
- To begin to understand that their own choices and behaviour can affect social institutions
- To learn how to take part more fully in school and community activities
- As they begin to develop into young adults, to learn how to face the changes of puberty and transfer to their next setting with support and encouragement from their school
- To learn how to make more confident and informed choices about their health and environment
- To take more responsibility, individually and as a group, for their own learning; and to resist bullying

Curriculum Implementation

The following three core themes should be covered over each academic year to ensure appropriate breadth and balance within the curriculum:

Key Stage 1 and 2:

- Physical health and mental wellbeing
- Relationships and Health Education (Primary)
- The wider world

Key stage 3, 4 and 5:

- Physical health and mental wellbeing
- Relationships and Sex and Health Education (Secondary)
- Living in the wider world

KS3 and KS4 will also need to complete the following during the Living in the Wider World blocks –

KS3:

Year 8 "I explore" individual pupil booklet
Year 9 "I focus" individual pupil booklet

KS4:

Year 10 "I plan" individual pupil booklet



Year 11 "I decide" individual pupil booklet
Year 12 "I apply" individual pupil booklet
Year 13/14 "I am ready" individual pupil booklet

Personalisation:

It is important to remember that PSHCE is to be taught flexibly and with the child and their current needs at the centre. PSHCE should be relevant and appropriate to the child, so that it can be used as a tool to acquire knowledge for current and significant topics to them. As stated by the DFE 'teachers are best placed to understand the needs of their pupils and do not need additional central prescription' (2021).

Pre-Formal Curriculum Pathway:

A holistic approach to exploring topics covered in PSHCE, PMH and RSE takes place within the Pre-Formal Curriculum Pathway. Personalised objectives may be explored in a variety of sessions, including Sensory Stories, TACPAC and Intensive Interaction. Learning will also take place in a variety of settings, such as the classroom, Multi Sensory Room, Art Room and in the sensory garden or forest school areas. The Pre-Formal Curriculum Long Term Plan outlines this in more detail.

Formal and Semi-Formal Curriculum Pathways:

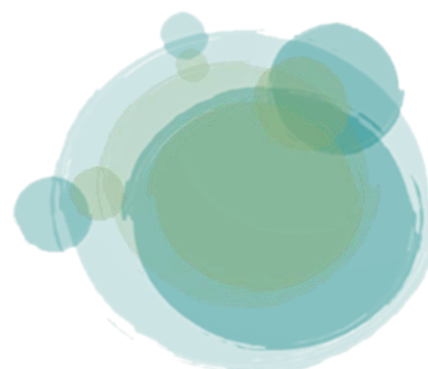
Pupils have a clearly timetabled PSHCE & RSE lesson each week. The Long Term Plan outlines the distribution of PSHCE, PMH and RSE topics over the year and ensures this a balanced curriculum. The nature and organisation of these lessons depends upon the age and ability of the pupils. PSHCE lessons are differentiated and personalised so that all pupils can access their lessons appropriately.

Pupils in the Semi-Formal Curriculum Pathway follow National Curriculum topics. The Long Term Plan is supported by planning and resources from EQUALS which enable appropriate delivery based on pupils' abilities.

Pupils in the Formal Curriculum Pathway follow the National Curriculum more closely but at an appropriate level to pupil's abilities. These lessons could still be supported by planning and resources from EQUALS where appropriate.

Each year consists of 3 blocks (rather than terms), each block covering one of the 3 core themes. Teachers can decide which of the 3 core themes will be delivered over the Autumn, Spring and Summer terms dependent on where the best impact can be achieved, using a cross curricular approach with other topics over the year. It is important to consider how RSHE can relate to areas of Science.

The equals PSHE and Citizenship schemes of work have been added to the LTP to offer some guidance and is not mandatory. RSE is a statutory requirement, however it is recognised that in special schools, there may be the need to tailor content and teaching to meet the specific needs of pupils at different developmental stages. Therefore, when referring to Equals schemes of work for guidance, please ensure teaching is sensitive and developmentally appropriate.



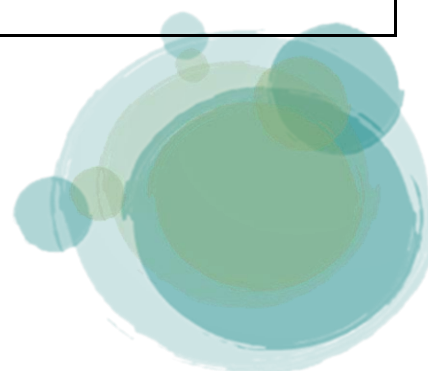
Key Stage 1:

Term	Formal Curriculum	Semi-Formal Curriculum
Key Stage 1 Autumn one 2022 Block 1.1	<u>Physical Health and Mental Wellbeing</u> Mental Well-being – <i>Equals Units 1.1a Knowing myself</i> Physical Health & Fitness – <i>Equals unit 1.3b Food/exercise 'Healthy Choices'</i> PSHE Association H1-9,H11,H12,13,14,15,16,18,19,20,21,24,25,26,27	<u>Physical Health and Mental Wellbeing</u> Mental Well-being - <i>Equals Units 1.1a Knowing myself</i> Physical Health & Fitness - <i>Equals unit 1.3b Food/exercise 'Healthy Choices'</i> PSHE Association H1,2,3,4,7,9,10,12,14,17,19,20,21,23,26,27
Key Stage 1 Spring one 2023 Block 1.2	<u>Relationships</u> Families and people who care for me – <i>Equals unit 1.4b The people around me</i> PSE Association R1,2,3,4 Respectful Relationships – <i>Equals unit 1.2a Belonging to groups</i> PSHE Association :R5,6,8	<u>Relationships</u> Families and people who care for me – <i>Equals unit 1.4b The people around me</i> PSHE Association :R1,2,3,4 Respectful Relationships – <i>Equals unit 1.2a Belonging to groups</i> PSHE Association :R5
Key Stage 1 Summer one 2023 Block 1.3	<u>The Wider World</u> Different Groups and communities – <i>Equals unit 1.1b Being aware in the community</i> PSE Association L4,5.6.13 Money - <i>Understanding where money comes from, different jobs and people who help us</i> PSHE Association:L10.11.12,13,15,16,17	<u>The Wider World</u> Different Groups and communities – <i>Equals unit 1.1b Being aware in the community</i> PSHE Association L1,4,5 Money - <i>Understanding where money comes from, parental/guardian jobs and people who help us</i> PSHE Association :L10.11.12.16
Key Stage 1 Autumn two 2023 Block 2.1	<u>Physical Health and Mental Wellbeing</u> Health & Prevention – <i>Equals unit 1.3a Ourselves</i> PSHE Association :H1.5.7.8. Healthy Eating – <i>Developing an understanding of healthy and unhealthy foods</i> PSHE Association :H1.2.	<u>Physical Health and Mental Wellbeing</u> Health & Prevention – <i>Equals unit 1.3a Ourselves</i> PSHE Association :H1..8 Healthy Eating – <i>Exploring and sorting foods</i> PSHE Association :H2
Key Stage 1 Spring two 2024 Block 2.2	<u>Relationships and Health Education</u> Caring Friendships – <i>Equals unit 1.4a Caring</i> PSHE Association :R1..2.3.4.6. Being Safe – <i>Equals unit 1.5b Personal responsibility</i> PSHE Association :R5	<u>Relationships and Health Education</u> Caring Friendships – <i>Equals unit 1.4a Caring</i> PSHE Association :R1.2 Being Safe – <i>Equals unit 1.5b Personal responsibility</i>
Key Stage 1 Summer two 2024 Block 2.3	<u>The Wider World</u> Respecting yourself and others – <i>Equals unit 1.5a Making personal choices</i> PSHE Association :L14 Respecting and protecting the environment – <i>Equals unit 1.2b Looking after our environment</i> PSHE Association :L3	<u>The Wider World</u> Respecting yourself and others – <i>Equals unit 1.5a Making personal choices</i> PSHE Association:iationiationiationiationL14 Respecting and protecting the environment – <i>Equals unit 1.2b Looking after our environment</i> PSHE Association L3

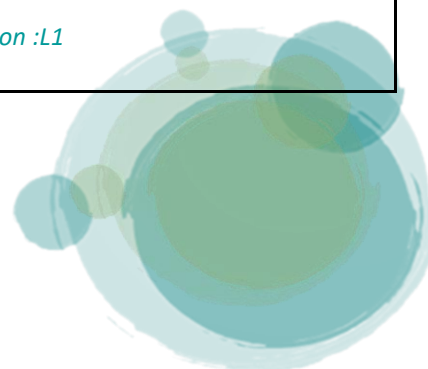


Key Stage 2:

Term	Formal Curriculum	Semi-Formal Curriculum
Key Stage 2 Autumn one 2022 Block 1.1	<u>Physical Health and Mental Wellbeing</u> Harm and Internet safety – <i>Equals unit 2.1b Choosing</i> PSHE Association : H13,37,41,42 Basic first aid – <i>Equals unit 2.5c Safety in the community</i> PSHE Association : H1,7,10,40,43,44	<u>Physical Health and Mental Wellbeing</u> Harm and Internet safety – <i>Equals unit 2.1b Choosing</i> PSE Association :H13,41 Basic first aid – <i>Equals unit 2.5c Safety in the community</i> PSHE Association : H5,10,43
Key Stage 2 Spring one 2023 Block 1.2	<u>Relationships and Health Education</u> Families and people who care for me – <i>Equals unit 2.4b My family</i> PSHE Association :R1,5,6,7,8, Respectful Relationships – <i>Equals unit 2.4c Playing and learning together</i> PSHE Association :R10,11,14,16,17,31,33,34	<u>Relationships and Health Education</u> Families and people who care for me – <i>Equals unit 2.4b My family</i> PSHE Association :R1,7,8 Respectful Relationships – <i>Equals unit 2.4c Playing and learning together</i> PSHE Association :R10, 14
Key Stage 2 Summer one 2023 Block 1.3	<u>The Wider World</u> Rights and responsibilities – <i>Equals unit 2.1d Taking responsibility towards others</i> PSHE Association :L4. Being a respectful, productive member of a group – My school PSHE Association :L5.	<u>The Wider World</u> Rights and responsibilities – <i>Equals unit 2.1d Taking responsibility towards others</i> PSHE Association :L4 Being a respectful, productive member of a group – My school PSHE Association ;L5
Key Stage 2 Autumn two 2023 Block 2.1	<u>Physical Health and Mental Wellbeing</u> Mental Well-being – <i>Equals unit 2.1a Being aware of my ability</i> PSHE Association :H25.27.28.35 Physical Health & Fitness – <i>Equals unit 2.3b Healthy Exercise</i> PSHE Association :H7.	<u>Physical Health and Mental Wellbeing</u> Mental Well-being – <i>Equals unit 2.1a Being aware of my ability</i> PSHE Association :H27.28 Physical Health & Fitness – <i>Equals unit 2.3b Healthy Exercise</i> PSHE Association :H7
Key Stage 2 Spring two 2024 Block 2.2	<u>Relationships and Health Education</u> Caring Friendships – <i>Equals unit 2.4a Friends</i> PSHE Association :R1.8.10.11.14.15.16.17 Being Safe – <i>Equals unit 2.3c Keeping Safe</i> PSHE Association :R9.11.12.15.17.24.27.28.29	<u>Relationships and Health Education</u> Caring Friendships – <i>Equals unit 2.4a Friends</i> PSHE Association :R1.8.10.11 Being Safe – <i>Equals unit 2.3c Keeping Safe</i> PSHE Association :9.11.12,22
Key Stage 2 Summer two 2024 Block 2.3	<u>The Wider World</u> Different Groups and communities – <i>Equals unit 2.2c Topical Issues</i> PSHE Association :L2.8..26.32 Money – <i>Equals unit 2.1c Communities</i> PSE Association :L17.18.19.20.21.22	<u>The Wider World</u> Different Groups and communities – <i>Equals unit 2.2c Topical Issues</i> PSHE Association :L2..8.26 Money – <i>Equals unit 2.1c Communities</i> PSE Association :L17.18

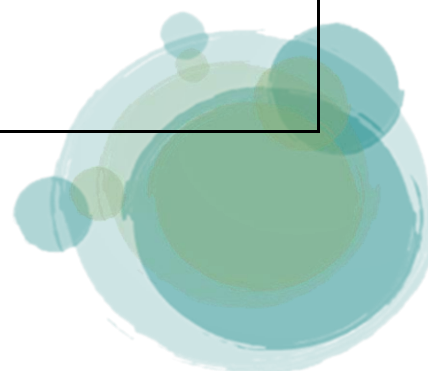


Term	Formal Curriculum	Semi-Formal Curriculum
Key Stage 2 Autumn three 2024 Block 3.1	<u>Physical Health and Mental Wellbeing</u> Changing adolescent body – <i>Equals Unit 2.3d Growing and changing</i> PSHE Association :H30.31.32,33,34, Healthy Eating – <i>Developing an understanding of the healthy eat well plate</i> PSHE Association :H6	<u>Physical Health and Mental Wellbeing</u> Changing adolescent body – <i>Equals Unit 2.3d Growing and changing</i> PSHSE Association :H31.32 Healthy Eating – <i>Developing an understanding of healthy and unhealthy foods</i> PSHE Association :H6
Key Stage 2 Spring three 2024 Block 3.2	<u>Relationships and Health Education</u> Families and people who care for me – <i>Equals unit 2.5d Respecting privacy. Private body parts.</i> PSHE Association :R25 Respectful Relationships – <i>Equals unit 2.4d – Special days. Relationships, love and care</i> PSHE Association :R3,5,6,30.31,33	<u>Relationships and Health Education</u> Families and people who care for me – <i>Equals unit 2.5d Respecting privacy. Private body parts</i> PSHE Association :R25 Respectful Relationships – <i>Equals unit 2.4d – Special days. Relationships, love and care</i> PSHE Association :R3,5,6,30
Key Stage 2 Summer Three 2024 Block 3.3	<u>The Wider World</u> Being a respectful, productive member of a group – Enterprise PSHE Association :L5,7, Money – <i>Equals units 2.2d Valuing Money</i> PSHE Association :L17,18,20,23,24	<u>The Wider World</u> Being a respectful, productive member of a group – Enterprise PSHE Association :L5,7 Money – <i>Equals units 2.2d Valuing Money</i> PSHE Association :L17,18,20
Key Stage 2 Autumn four 2024 Block 4.1	<u>Physical Health and Mental Wellbeing</u> Drugs, alcohol and tobacco - <i>Equals unit 2.3a Medicine and drugs</i> PSE Association :H46,47,48,49,50 Changing adolescent body – <i>Equals unit 2.5a Knowing how I am changing. Puberty and changes.</i> PSHE Association :H31,32	<u>Physical Health and Mental Wellbeing</u> Drugs, alcohol and tobacco - <i>Equals unit 2.3a Medicine and drugs</i> PSHE Association :H46,47,48 Changing adolescent body – <i>Equals unit 2.5a Knowing how I am changing. Puberty and changes.</i> PSHE Association :H32
Key Stage 2 Spring four 2025 Block 4.2	<u>Relationships and Health Education</u> Being safe – <i>Equals unit 2.5b Rights and choices. Recognising risk and protecting their bodies.</i> PSHE Association :R1,24,25 Caring Friendships and online relationships – <i>Exploring the different friendships and types of communication.</i> PSHE Association :R1.8,14,31	<u>Relationships and Health Education</u> Being safe – <i>Equals unit 2.5b Rights and choices. Recognising risk and protecting their bodies.</i> PSHE Association :R1.25 Caring friendships – <i>Coping with healthy and unhealthy relationships. Resolving conflict.</i> PSHE Association :R1.8,17
Key Stage 2 Summer four 2025 Block 4.3	<u>The Wider World</u> Respecting and protecting the environment – <i>Equals unit 2.2a Recycling</i> PHSE Association :L5 Rights and responsibilities – <i>Equals unit 2.2b Rules</i> PHSE Association :L1	<u>The Wider World</u> Respecting and protecting the environment – <i>Equals unit 2.2a Recycling</i> PHSE Association :L5 Rights and responsibilities – <i>Equals unit 2.2b Rules</i> PHSE Association :L1

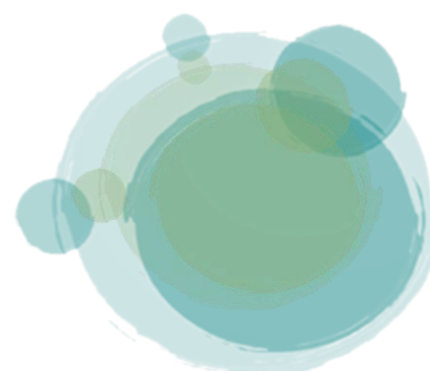


Key Stage 3:

Term	Formal Curriculum	Semi-Formal Curriculum
Key Stage 3 Autumn one 2022 Block 1.1	<u>Physical Health and Mental Wellbeing</u> Mental Wellbeing – <i>Equals unit 3.1a Recognising my needs</i> <i>PSHE Association:2,3,4,5</i> Physical Health and fitness – <i>Equals unit 3.3a Health and exercise</i> <i>PSHE Association:H14,17,18</i>	<u>Physical Health and Mental Wellbeing</u> Mental Wellbeing – <i>Equals unit 3.1a Recognising my needs</i> <i>PSHE Association:H12,,3,</i> Physical Health and fitness – <i>Equals unit 3.3a Health and exercise</i> <i>PSHE Association:H14,17</i>
Key Stage 3 Spring one 2023 Block 1.2	<u>Relationships and Health Education</u> Families – <i>Equals unit 3.4a Changing relationships. Human reproduction and pregnancy.</i> <i>PSHE Association:R32,33,34</i> Respectful relationships including friendships – <i>Equals unit 3.4c Respecting others</i> <i>PSHE Association,14,</i>	<u>Relationships and Health Education</u> Families – <i>Equals unit 3.4a Changing relationships. Human reproduction and pregnancy.</i> <i>PSHE Association:R34</i> Respectful relationships including friendships – <i>Equals unit 3.4c Respecting others</i> <i>PSHE Association,14</i>
Key Stage 3 Summer one 2023 Block 1.3	<u>Living in the Wider World</u> Rights and responsibilities as members of diverse communities, as active citizens and participants in the local community – <i>Equals Unit 3.1d Communities and cultures</i> <i>PSHE Association:L13,14</i> Develop employability, team work and leadership skills, developing flexibility and resilience – <i>Equals unit 3.2a Everyday choices</i> <i>PSHE Association:L11,12</i>	<u>Living in the Wider World</u> Rights and responsibilities as members of diverse communities, as active citizens and participants in the local community – <i>Equals Unit 3.1d Communities and cultures</i> <i>PSHE Association:L13</i> Develop employability, team work and leadership skills, developing flexibility and resilience – <i>Equals unit 3.2a Everyday choices</i> <i>PSHE Association:L12</i>
Key Stage 3 Autumn two 2023 Block 2.1	<u>Physical Health and Mental Wellbeing</u> Changing adolescent body and Personal Hygiene – <i>Equals unit 3.5a My Changing body. Equals unit 3.3e Personal Hygiene</i> <i>PSHE Association:H19</i> Healthy Eating – <i>Equals unit 3.3c Health Lifestyles</i> <i>PHSE Association</i>	<u>Physical Health and Mental Wellbeing</u> Changing adolescent body and Personal Hygiene – <i>Equals unit 3.5a My Changing body. Equals unit 3.3e Personal Hygiene</i> <i>PSHE Association:H19</i> Healthy Eating – <i>Equals unit 3.3c Health Lifestyles</i> <i>PHSE Association:H17</i>
Key Stage 3 Spring two 2024 Block 2.2	<u>Relationships and Health Education</u> Being Safe – <i>Equals unit 3.4e Peer Pressure. Masturbation.</i> <i>PSHE Association:R2443.44,46</i> Online and Media – <i>Equals unit 3.1c Media and advertising</i>	<u>Relationships and Health Education</u> Being Safe – <i>Equals unit 3.4e Peer Pressure. Masturbation.</i> <i>PSHE Association,44</i> Online and Media – <i>Equals unit 3.1c Media and advertising</i>



Term	Formal Curriculum	Semi-Formal Curriculum
Key Stage 3 Summer two 2024 Block 2.3	<u>Living in the Wider World</u> Making informed choices and being enterprising and ambitious – <i>Equals unit 3.2b Earning and spending</i> Budgeting, salaries and bank accounts and how financial choices affect yourself and others – <i>Equals unit 3.1e Money and environment</i> <i>PSHE Association:L15.16,17.18</i>	<u>Living in the Wider World</u> Making informed choices and being enterprising and ambitious – <i>Equals unit 3.2b Earning and spending</i> Budgeting, salaries and bank accounts and how financial choices affect yourself and others – <i>Equals unit 3.1e Money and environment</i> <i>PSHE Association:L15,16</i>
Key Stage 3 Autumn three 2024 Block 3.1	<u>Physical Health and Mental Wellbeing</u> Health and prevention and basic first aid – <i>Equals unit 3.1b Risk Assessment</i> <i>PSHE Association:H33</i> Internet safety and harms – <i>Equals unit 3.5e Personal sensitivity</i> <i>PSHE Association.31</i>	<u>Physical Health and Mental Wellbeing</u> Health and prevention and basic first aid – <i>Equals unit 3.1b Risk Assessment</i> <i>PSHE Association:H33</i> Internet safety and harms – <i>Equals unit 3.5e Personal sensitivity</i> <i>PSHE Association:H30</i>
Key Stage 3 Spring three 2025 Block 3.2	<u>Relationships and Health Education</u> Intimate Relationships- <i>Equals unit 3.5b Awareness and coping</i> <i>PSHE Association:R9.10.11,13</i> Sexual relationships including sexual health – <i>Equals unit 3.5c being myself. Contraception and safe sex.</i> <i>Responsibilities of parenthood.</i> <i>PSHE Association:R32.33.34.3536</i>	<u>Relationships and Health Education</u> Intimate Relationships- <i>Equals unit 3.5b Awareness and coping</i> <i>PSHE Association:R9,13</i> Sexual relationships including sexual health – <i>Equals unit 3.5c being myself.</i> <i>PSHE Association:R32.33.34</i>
Key Stage 3 Summer three 2025 Block 3.3	<u>Living in the Wider World</u> Economic and business environments. Rights and responsibilities as consumers – <i>Equals unit 3.2d Helping others</i> Living Safely in a 'connected' world – <i>Equals unit 3.1f Feelings</i> <i>PSHE Association:L11</i>	<u>Living in the Wider World</u> Economic and business environments. Rights and responsibilities as consumers – <i>Equals unit 3.2d Helping others</i> Living Safely in a 'connected' world – <i>Equals unit 3.1f Feelings</i> <i>PSHE Association:11L</i>



Key Stage 4:

Term	Formal Curriculum	Semi-Formal Curriculum
Key Stage 4 Autumn one 2022 Block 1.1	<u>Physical Health and Mental Wellbeing</u> Mental Wellbeing – <i>Equals unit 4.4f Crisis and response</i> <i>PSHE Association:H8.9.10</i> Physical Health and fitness – <i>Equals unit 3.3f Exercise of fun</i> <i>PSHE Association :H 11.12</i>	<u>Physical Health and Mental Wellbeing</u> Mental Wellbeing – <i>Equals unit 4.4f Crisis and response</i> <i>PSHE Association:H8.9</i> Physical Health and fitness – <i>Equals unit 3.3f Exercise of fun</i> <i>PSHE Association:H11</i>
Key Stage 4 Spring one 2023 Block 1.2	<u>Relationships and Health Education</u> Intimate Relationships – <i>Equals unit 4.4e Communicating about feelings and relationships</i> <i>PSHE Association: R</i> Sexual relationships including sexual health – <i>Equals unit 4.3a Safe relationships and lifestyle</i>	<u>Relationships and Health Education</u> Families – <i>Equals unit 4.4e Communicating about feelings and relationships</i> <i>PSHE Association:R4</i> Respectful relationships including friendships – <i>Equals unit 4.3a Safe relationships and lifestyle</i>
Key Stage 4 Summer one 2023 Block 1.3	<u>Living in the Wider World</u> Develop employability, team work and leadership skills, developing flexibility and resilience – <i>Equals unit 3.4b Self evaluation</i> <i>PSHE Association:L10</i> Rights and responsibilities– <i>Equals unit 4.1d Rights in the community</i> <i>PSHE Association:L13</i>	<u>Living in the Wider World</u> Develop employability, team work and leadership skills, developing flexibility and resilience – <i>Equals unit 3.4b Self evaluation</i> <i>PSHE Association:L10</i> Rights and responsibilities– <i>Equals unit 4.1d Rights in the community</i> <i>PSHE Association:L13</i>
Key Stage 4 Autumn two 2023 Block 2.1	<u>Physical Health and Mental Wellbeing</u> Physical Health – <i>Equals unit 3.3b Leisure Awareness</i> Mental Health and prevention and basic first aid – <i>Equals unit 3.4d Lifestyle</i>	<u>Physical Health and Mental Wellbeing</u> Physical Health – <i>Equals unit 3.3b Leisure Awareness</i> Mental Health and Health Eating – <i>Equals unit 3.4d Lifestyle</i>
Key Stage 4 Spring two 2024 Block 2.2	<u>Relationships and Health Education</u> Being Safe – <i>Equals unit 4.5b Teenage pregnancy. Responsibilities of parenthood.</i> <i>PSHE Association:R24.25</i> Online and Media – <i>Equals unit 4.4a Stereotypes. Explicit images, pornography and the law.</i>	<u>Relationships and Health Education</u> Being Safe – <i>Equals unit 4.5b Teenage pregnancy. Responsibilities of parenthood.</i> <i>PSHE Association:R24</i> Online and Media – <i>Equals unit 4.4a Stereotypes</i>
Key Stage 4 Summer two 2024 Block 2.3	<u>Living in the Wider World</u> Making informed choices and being enterprising and ambitious – <i>Equals unit 4.1f Taking responsibility for employment</i> <i>PSHE Association:L1</i> Budgeting, salaries and bank accounts and how financial choices affect yourself and others – <i>Equals unit 4.1e Co-operating</i> <i>PHSE Association:L16</i>	<u>Living in the Wider World</u> Making informed choices and being enterprising and ambitious – <i>Equals unit 4.1f Taking responsibility for employment</i> <i>PSHE Association:L1</i> Budgeting, salaries and bank accounts and how financial choices affect yourself and others – <i>Equals unit 4.1e Co-operating</i> <i>PHSE Association:L16</i>



Key Stage 5:

Term	Formal Curriculum	Semi-Formal Curriculum
Key Stage 5 Autumn one 2022 Block 1.1	<u>Physical Health and Mental Wellbeing</u> Mental Wellbeing – <i>Equals unit 4.1a Self esteem</i> <i>PSHE Association:2,3:H1</i> Physical Health and fitness – <i>Equals unit 4.3b Leisure and relaxation</i> <i>PSHE Association:H8.12</i>	<u>Physical Health and Mental Wellbeing</u> Mental Wellbeing – <i>Equals unit 4.1a Self esteem</i> <i>PSHE Association:H1,2</i> Physical Health and fitness – <i>Equals unit 4.3b Leisure and relaxation</i> <i>PSHE Association:H8.12</i>
Key Stage 5 Spring one 2023 Block 1.2	<u>Relationships and Health Education</u> Healthy and unhealthy relationships – <i>Equals unit 4.5d Relationships and divorce. Sexuality. LGBT.</i> Sexual relationships including sexual health – <i>Equals unit 4.5e Pregnancy and birth. Responsibilities of parenthood.</i>	<u>Relationships and Health Education</u> Families – <i>Equals unit 4.5e Pregnancy and birth. Responsibilities of parenthood.</i> Healthy and unhealthy relationships – <i>Equals unit 4.5d Relationships and divorce</i>
Key Stage 5 Summer one 2023 Block 1.3	<u>Living in the Wider World</u> Develop employability, team work and leadership skills, developing flexibility and resilience – <i>Equals unit 4.4c Working relationships</i> <i>PSHE AssociationL8</i> Economic and business environments. Rights and responsibilities as consumers – <i>Equals unit 4.2e Raise money for charity</i>	<u>Living in the Wider World</u> Develop employability, team work and leadership skills, developing flexibility and resilience – <i>Equals unit 4.4c Working relationships</i> <i>PSHE Association:L8</i> Economic and business environments. Rights and responsibilities as consumers - <i>Equals unit 4.2e Raise money for charit</i>
Key Stage 5 Autumn two 2023 Block 2.1	<u>Physical Health and Mental Wellbeing</u> Personal Hygiene – <i>Equals unit 4.3c Personal care and hygiene</i> Health and prevention and basic first aid – <i>Equals unit 4.3e Healthy eating</i>	<u>Physical Health and Mental Wellbeing</u> Personal Hygiene – <i>Equals unit 4.3c Personal care and hygiene</i> Healthy Eating – <i>Equals unit 4.3e Healthy eating</i>
Key Stage 5 Spring two 2024 Block 2.2	<u>Relationships and Health Education</u> Being Safe – <i>Equals unit 4.5a Understanding my bodily needs. Delaying sexual activity.</i> <i>PSHE AssociationR13</i> Online and Media – <i>Equals unit 4.2f The media</i> Internet safety. Living Safely in a ‘connected’ world – <i>Equals unit 4.4d Ethnic diversity. Radicalisation.</i> <i>PSHE Association:R3</i>	<u>Relationships and Health Education</u> Being Safe – <i>Equals unit 3.5f Human Development</i> <i>PSHE AssociationR14</i> Online and Media – <i>Equals unit 4.2f The media</i> Internet safety. Living Safely in a ‘connected’ world – <i>Equals unit 4.4d Ethnic diversity. Radicalisation.</i> <i>PSHE Association:R3</i>
Key Stage 5 Summer two 2024 Block 2.3	<u>Living in the Wider World</u> Making informed choices and being enterprising and ambitious – <i>Equals unit 4.4b Planning for the future</i> <i>PSHE AssociationL1</i> Budgeting, salaries and bank accounts and how financial choices affect yourself and others – <i>Equals unit 4.2b Banks and saving</i> <i>PSHE AssociationL13.14</i>	<u>Living in the Wider World</u> Making informed choices and being enterprising and ambitious – <i>Equals unit 4.4b Planning for the future</i> <i>PSHE AssociationL1</i> Budgeting, salaries and bank accounts and how financial choices affect yourself and others – <i>Equals unit 4.2b Banks and saving</i>

Key Stage 5 Autumn three 2024 Block 3.1	<u>Physical Health and Mental Wellbeing</u> Mental Wellbeing – <i>Equals unit 4.3d Drug awareness</i> <i>PSHE Association:H21.</i> Physical Health and fitness – <i>Equals unit 4.3f Exercise is for life</i> <i>PSHE AssociationH8.12</i>	<u>Physical Health and Mental Wellbeing</u> Mental Wellbeing – <i>Equals unit 4.3d Drug awareness</i> <i>PSHE AssociationH21</i> Physical Health and fitness – <i>Equals unit 4.3f Exercise is for life</i> <i>PSHE AssociationH8.12</i>
Key Stage 5 Spring three 2025 Block 3.2	<u>Relationships and Health Education</u> Intimate and sexual relationships – <i>Equals unit 4.5f Sexuality and enjoyment. Sexually transmitted infections.</i> Being safe and sexual Health – <i>Equals unit 4.5c Sexual Health. Contraception and safe sex for LGBT.</i> <i>PSHE AssociationR14</i>	<u>Relationships and Health Education</u> Respectful relationships – <i>Equals unit 3.4f Making compromise, goodwill and conflict resolution</i> Families – <i>Equals unit 3.5d Community belonging</i> <i>PSHE AssociationR14</i>
Key Stage 5 Summer three 2025 Block 3.3	<u>The Wider World</u> Rights and Responsibilities – <i>Equals unit 4.1b Democracy and human rights. Sex and the law.</i> Developing flexibility and resilience – <i>Equals unit 4.1c Change in the community</i>	<u>The Wider World</u> Rights and Responsibilities – <i>Equals unit 4.1b Democracy and human rights</i> Developing flexibility and resilience – <i>Equals unit 4.1c Change in the community</i>

Curriculum Impact

Opportunities for Assessment for Learning are built into provision:

- Baseline assessments are used to ensure new learning is relevant and progress can be made
- Pupils are provided with opportunities to reflect on and assess their learning and recognise its relevance to their day to day lives
- Progress in PSHCE education is recorded and reported to parents in line with all other non-core curriculum subjects
- Questionnaires, discussions and teacher and TA assessments all form part of the assessment process
- Pupils are given the opportunity to engage in self-assessment and evaluations
- Teacher evaluations take place at the end of units

