



Chadsgrove School Support Services



Learning Support Team

CCN Team

Occupational Therapy

Early Years

Play Therapy

SALT

PD Team

Vision Impairment



Pathways Team

Service Directory

2024 - 2025

Welcome



Welcome to our 2024-25 traded services directory offering a full range of specialist support services to meet the needs of your pupils and setting. At Chadsgrove School Support Services, we are very aware that schools are under increasing financial pressure, which is why we believe in offering high quality support services at a realistic and affordable price.

Our flexible service approach continues to give you the ultimate control in the way that you use specialist support services: *you decide when you refer and which service you refer to*. Our vision of providing high quality support means that we are continually reviewing and developing our service portfolio: ***we care, we share, we deliver!***

I am delighted to announce that we will be offering Autism Education Trust (AET) *Making Sense of Autism Training* for free in 2024.

Further exciting developments are planned during this financial year and directory updates will be sent out to you as new services are launched.

If you would like to discuss your school or setting requirements with us or to find out more about our services, then please do not hesitate to contact us.

Purchasing your services

Services can be ordered by contacting our administration team who will be more than happy to discuss your individual needs:

schoolsupportservices@chadsgrove.worcs.sch.uk

01527 877262

We look forward to working with you.

Anna Mugridge

Head of Service



Vision and Values

“Supporting schools and teachers to deliver educational excellence for all children”

We care

We believe specialist input should be SMART:

- ◆ *Supportive*
- ◆ *Meaningful*
- ◆ *Accessible*
- ◆ *Robust*
- ◆ *Timely*

We share

We believe knowledge is for sharing, we therefore ensure:

- ◆ *That language in reports and advice is accessible to all readers*
- ◆ *Advice is evidence based*
- ◆ *The team are easily contactable for schools and parents to discuss recommendations.*
- ◆ *Support is available for modelling of approaches*

We deliver

We ensure that we deliver:

- ◆ *Support that is individualised*
- ◆ *Recommendations that are personalised*
- ◆ *Provision that meets need*
- ◆ *Training for sustainability*

Chadsgrove School Support Services

Central Administration Team

Telephone 01527 877262

Email: schoolsupportservices@chadsgrove.worcs.sch.uk

Website:

https://www.chadsgroveschool.org.uk/web/school_support_services

Contents

1. Welcome
2. Support Packages
3. Learning Support Team
5. Assessment Route to Dyspraxia Motorway
6. Complex Communication Needs (CCN) Team
7. Pathways
9. Paediatric Occupational Therapy Services
10. Early Years (School and PVI Settings)
11. Play Therapy
13. Speech and Language Therapy Services
14. Physical Disability Team
15. Vision Impairment
16. SEND Review & Strategic Support
17. SpLD Quality Mark
19. Training and CPD
21. Autism Education Trust (AET)
24. Careers Advisory Team
25. Bitesize Inclusion Pedagogy Sessions (BIPS)
26. SPLD Practitioner Course

Support Packages

Support packages will be devised in consultation with the school, and may be commissioned using pre-purchased agreements or on a pay-as-you go basis. Pre-purchased units represent a generous saving compared to pay-as-you-go. Once units have been purchased, we will maintain an account for the school.

Pre-Purchased Unit Packages	
Single Unit Price	£50 <i>Minimum initial purchase = 20 units</i>
Additional units are available to top-up packages at £50 per unit 5% discount for purchases of 50 + units (per single transaction)	

(PAYG) prices listed under individual team services. Please note PAYG is not available for all services, please check team specific information in the directory.

We believe everyone should benefit from discounts, therefore at Chadsgrove School Support Services we offer discounts ALL year round.

That's our 365 guarantee!

Learning Support Team



The Learning Support Team (LST) is made up of a team of specialist teachers experienced in working with children and young people with a range of learning needs. In addition, the team is qualified to diagnose Dyslexia and Dyscalculia; they are also a key component of the *Dyspraxia Motorway*.

The team carry out assessments to identify challenges to educational progress (including diagnosis of Specific Learning Difficulties—SpLDs) and make recommendations for support based upon their findings. These recommendations may include individualised programmes of support, approaches and strategies, classroom support and advice on inclusive practice.

Services include:

- ◆ Cognitive assessments
- ◆ Dyslexia and Dyscalculia (SpLD) diagnostic assessments (pupils aged seven and above)
- ◆ Dyslexia screening
- ◆ Specialist advice
- ◆ Support with interventions
- ◆ 1:1 or small group teaching
- ◆ Examination Access Arrangements
- ◆ Strengths and Needs assessments
- ◆ Learning review and progress updates
- ◆ Training packages (please see training section of directory)
- ◆ Assessment evidence for *Disabled Student Allowance* (Dyslexia)



Short Learning Review

Short Learning Review is designed to give you updated information about the progress a pupil has made since their last LST cognitive assessment.

This pick and mix style assessment allows you to choose up to four core areas (see assessment menu) that you would like updated information about.

The Short Learning Review consists of:

- ◆ Assessment
- ◆ Scores and findings
- ◆ Conclusion
- ◆ Targets and support recommendations

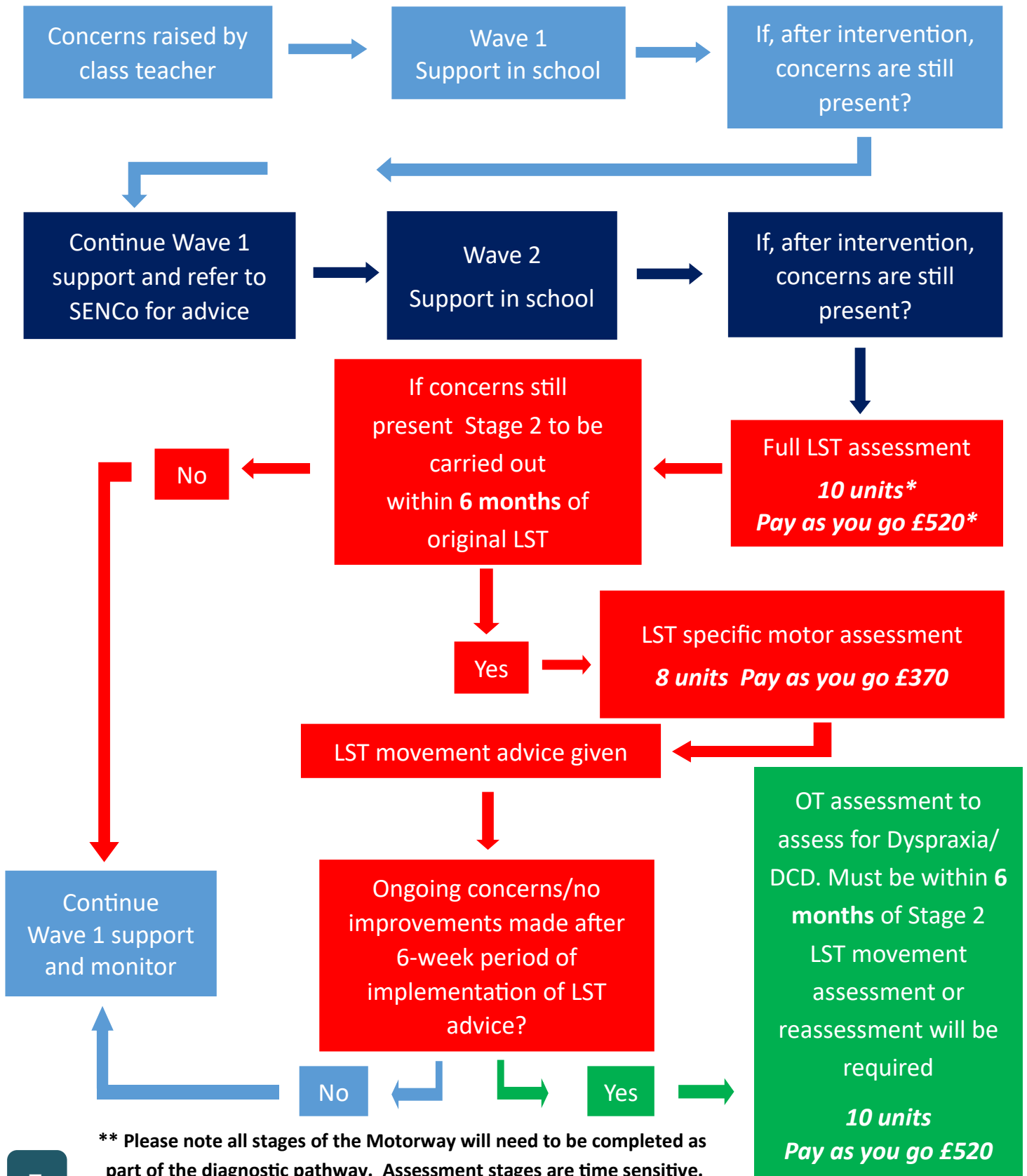
NB: The Short Learning Review is only available within a two year period post full LST assessment

Assessment Menu

- ◆ Reading
(single word, nonsense word, passage and comprehension)
- ◆ Spelling
- ◆ Language and Comprehension
(expressive and receptive)
- ◆ Motor Coordination
- ◆ Phonological Awareness
- ◆ Visual Perception
- ◆ Processing
- ◆ Memory

	Units	Pay as you go
Full Learning Support Assessment (including Dyslexia diagnosis as appropriate)* To include: <ul style="list-style-type: none"> ◆ Diagnostic cognitive assessment ◆ Written report ◆ Recommendations and advice <small>*subject to DDM outcome</small>	10 units	£520
Full Dyscalculia Assessment To include: <ul style="list-style-type: none"> ◆ Diagnostic cognitive assessment ◆ Literacy and Numeracy focus ◆ Written report ◆ Recommendations and advice ◆ Dyslexia or Dyscalculia diagnosis (as appropriate)* <small>*subject to DDM outcome</small>	14 units	£720
Short Dyscalculia Assessment <small>(for pupils aged 7 years plus)</small> Maths focus— only available if a full LST assessment has been completed within the last year <small>*subject to DDM outcome. All Dyscalculia assessments will automatically be submitted to DDM panel—please see cost below.</small>	10 units	£520
Diagnostic Decision Meeting (DDM) Minimum age for a diagnosis is seven	1 unit per pupil <small>(or £55 Pay as you go) for pupils aged seven and over where a diagnostic decision is required e.g. dyslexia, dyscalculia</small>	
Short Learning Reviews (SLRs) <ul style="list-style-type: none"> ◆ Only available as a follow up to a full LST assessment ◆ Review must be within 24 months of previous assessment To include: <ul style="list-style-type: none"> ◆ Reassessment of up to four core areas of difficulty (see assessment menu) ◆ Short report with targets/focus areas 	7 units <small>(not available on pay as you go)</small>	
Strengths and Needs Assessment <small>(Early Years and Reception aged pupils)</small>	8 units <small>(not available on pay as you go)</small>	
Dyslexia Screening <small>(not a diagnostic assessment)</small> To include: <ul style="list-style-type: none"> ◆ Screening by a specialist teacher ◆ Short outcome report 	3 units per pupil <small>(minimum of two pupils)</small> <small>(not available on pay as you go)</small>	
Examination Access Arrangements	Bespoke—Price on request	
Modelling approaches and strategies to enhance pupil progress and engagement	5 units	£270
Individualised programmes of intervention to match pupil needs <small>(only available after a full LST assessment)</small> <ul style="list-style-type: none"> ◆ Provides 30 minute 1:1 teaching session for up to three pupils per half day provision—minimum number of sessions = six (one session per week) 	5 units per half day	£270 per half day
Attendance at Annual Reviews or meetings <small>(subject to availability)</small>	2 units	£120

Assessment Route



** Please note all stages of the Motorway will need to be completed as part of the diagnostic pathway. Assessment stages are time sensitive.

*Plus DDM panel—see LST page 4

Complex Communication Needs (CCN) Team

Our team of experienced specialist teachers can provide support and advice on responding to the needs of children and young people on the autism spectrum. This may take the form of assessing individual need, provision audits, specific staff training, resource development, curriculum adaptation to support quality first teaching, and/or ongoing monitoring and advice. The team can also advise on the use of specific approaches including: structured teaching, social stories, and visual communication systems.

	Units	Pay as you go
School based assessment relating to an individual pupil including report	10 units	£520
Enhanced Assessment of Need To include: <ul style="list-style-type: none"> ◆ CCN Assessment ◆ SEMH Assessment 	12 units	£640
CCN 360 Assessment <ul style="list-style-type: none"> ◆ School assessment (half day) ◆ Home assessment (half day) ◆ Combined 360 report 	15 units	£790
CCN Team Review Package (ONLY available post school based or 360 assessment) Minimum of 1 term between original CCN and review (maximum gap 2 terms) Package includes: <ul style="list-style-type: none"> ◆ Monitoring ◆ Evaluation visit feedback 	5 units	£270
Autism Awareness Support Individual pupil awareness programme (ONLY available post school based or 360 assessment) Package includes: 5 x 1 hour sessions 1 hour virtual meeting— school and parent carers (available post school based or 360 assessment)	12 units	£640
SENCO Support Clinic To include: <ul style="list-style-type: none"> ◆ Pupil Profiles ◆ Strengths & Needs Visits ◆ Caseload Reviews and Bespoke Support ◆ Parent Meetings 	10 units per day 5 units per half day	£520 per day £270 per half day
Graduated Response Package To include: <ul style="list-style-type: none"> ◆ Initial visit and report ◆ 2 x review visits ◆ Final visit and report 	28 units	£1500
Demonstration/modelling of support - post assessment	Half Day = 5 units Full Day = 10 units	Half Day = £270 Full Day = £520
Attendance at Annual Reviews or meetings (subject to availability)	2 units	£120

Pathways

Primary Pathways

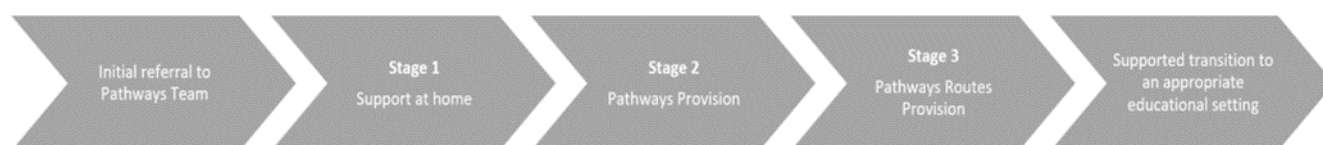
Secondary Pathways

The Pathways Team provides a transdisciplinary approach, supporting pupils aged 7-16 who are not attending school due to anxiety and/or neurodiverse needs (emotionally based school avoidance). Support is overseen and coordinated by a lead CCN specialist teacher, who will liaise with the pupil's host school, parents, and external professionals. They will coordinate the transdisciplinary approach and provision, referring to the following specialists at Stage 2 as appropriate:

- ◆ Cognitive assessments and SpLD diagnostics – Learning Support Team
- ◆ Speech and Language Team
- ◆ Occupational Therapy (e.g. sensory assessment, sensory diets, direct therapy etc.)
- ◆ SEMH Advisory Team

The Team will:

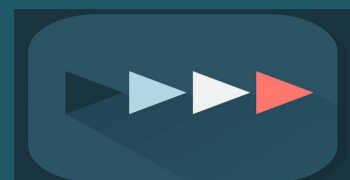
- ◆ Support at home—specialist teacher and/or specialist practitioner visits, virtual meetings, resources etc.
- ◆ Support pupils to access community activities
- ◆ Liaise and advise pupil's host school
- ◆ Attend professional meetings
- ◆ Provide specialist reports
- ◆ Provide support at the dedicated *Pathways Team* provision, which is designed to support up to four pupils on a part time, short term basis
- ◆ Provide a transdisciplinary assessment of need, leading to a personalised learning pathways for each pupil
- ◆ Provide pupils with opportunities to access accredited achievement schemes *
- ◆ Support transition to enable reintegration into an appropriate full time educational



The provision of support is bespoke to each pupil to meet their individual needs, therefore timings for transition from Stage 1 to Stage 2, and from Stage 2 back to full time education, will vary. Transitions will be discussed at pupil review meetings.

	Units
<p>Stage 1</p> <p>To include:</p> <ul style="list-style-type: none"> ◆ Lead specialist teacher ◆ Up to 3 hours of support per week via home visits, virtual meetings, creation of resources ◆ Target setting and reviews ◆ Attendance at meetings ◆ Transition planning with Pathways provision team 	<p>10 units per week (not available on Pay as you go)</p>
<p>Stage 2</p> <p>To include:</p> <ul style="list-style-type: none"> ◆ Lead specialist teacher ◆ Up to 3 half days at Pathways Provision ◆ Transdisciplinary input as required: Learning support Team, Occupational Therapy, SEMH Advisory Team etc.. ◆ Continued support at home ◆ Resources ◆ Weekly Progress Review Meeting feedback ◆ Target setting and reviews ◆ Attendance at meetings ◆ EHCP support ◆ Transition planning ◆ Access to accredited award scheme * <p>(* subject to a supplementary surcharge of 1 unit per pupil per academic year for unlimited access to award scheme units and certification. This surcharge will automatically be added to your account or invoice at the time the pupil transitions from Stage 1 to Stage 2.)</p>	<p>16 units per week (not available on Pay as you go)</p>
<p>Stage 3</p> <p>To include:</p> <ul style="list-style-type: none"> ◆ Lead specialist teacher ◆ Up to 3 half days at a <i>Pathways Routes Provision</i> ◆ Tutor and Specialist practitioner input across 3 half days at <i>Pathways Routes Provision</i> ◆ Transdisciplinary input as required ◆ Continued support at home as required ◆ Resources ◆ Weekly Progress Review Meeting feedback ◆ Target setting and reviews ◆ Attendance at meetings ◆ EHCP support ◆ Transition planning to longer term educational setting 	<p>20 units per week (not available on Pay as you go)</p>

Positive journeys, start with *Pathways*



Paediatric Occupational Therapy Services

Occupational Therapists are professionals who enable children and young people to participate fully in all aspects of life whether this be completing handwriting activities, playing with their peers, accessing their environment or managing in the classroom and wider school environment.

Occupational Therapy input can take the form of support and assessment of individual children, staff training and development of programmes. The team offer a range of therapy options devised to meet the needs of individual children or schools.

	Units	Pay as you go
Sensory Assessment Assessment, full report and feedback	12 units	£620
Motor Assessment	See <i>Dyspraxia Motorway</i> for referral and assessment process	
Set up sensory diet or motor skills programme (Only available after a Full Sensory Assessment)	5 units per child Pay as you go £270	
Audit of the whole school environment (please contact to discuss your individual requirements)	Full Day = 10 units	Full Day = £520

Early Years (School and PVI Settings)

We can offer schools and settings a range of Early Years Foundation Stage support for working with children in nursery and reception classes. Advice and guidance is available to ensure quality provision with reference to EYFS and Ofsted frameworks.

Our experienced Early Years specialist teachers can deliver advisory, coaching and modelling sessions, assessments, and inclusion audits.

	Units	Pay as you go
Inclusion audits	Full Day = 10 units	Full Day = £520
EYFS practice and provision support and advice	Half Day = 5 units Full Day = 10 units	Half Day = £270 Full Day = £520
Ofsted readiness	Full Day = 10 units	Full Day = £520
Behaviour support advice	Half Day = 5 units Full Day = 10 units	Half Day = £270 Full Day = £520
Specialist support to assist with the identification of emerging needs	Half Day = 5 units Full Day = 10 units	Half Day = £270 Full Day = £520
Individual Pupil Assessment - Strengths and Needs Profile <i>Supports LST and CCN provision</i> (to include standardised assessment data where appropriate)	8 units	£420
Attendance at Annual Reviews or meetings (subject to availability)	2 units	£120

Play Therapy

The team is made up of qualified play therapists experienced in working with children and young people with a range of presenting behaviours.

The team are able to carry out assessments to identify the emotional needs of pupils and how these are impacting on learning and behaviour. Recommendations may include individual therapy, therapy to include family members, therapeutic group work, group therapy or tailored staff training in responding therapeutically to children displaying distressed behaviour.

Play therapy is a gentle yet effective technique which can lead the child on a life changing journey to a more hopeful and positive place.

How do I know which of my pupils would benefit from/need Play Therapy?

Do you know a child who...?

- ◆ Suffers because of separated/divorced parents/carers?
- ◆ Is withdrawn or continually unhappy?
- ◆ Finds it difficult to make friends?
- ◆ Quarrels frequently with peers or siblings?
- ◆ Bullies others or is bullied themselves?
- ◆ Displays inappropriate or challenging behaviour?
- ◆ Is not realising their full potential - academically, or socially?
- ◆ Has nightmares or has disturbed sleep?
- ◆ Has witnessed Domestic Violence?
- ◆ Is at risk of being/is excluded from school?
- ◆ Has suffered trauma or a loss / bereavement
- ◆ Has suffered emotional, physical or sexual abuse?
- ◆ Is adopted or fostered or in the process of being?
- ◆ Suffers from anxiety, stress or phobias?

	Units	Pay as you go
Initial Assessment of need and report (<i>Mandatory</i>)	10 units	£520
Therapy sessions <i>No. of sessions required will be detailed within the initial report. Each session is 1.5 hours in duration (45 min direct contact, 45 min planning and reporting)</i>	2 sessions = 5 units	2 sessions = £270

Play Therapy

Stage 1

Referral forms sent to Central Administration Team



Stage 2

Initial telephone conversation with Lead Therapist

This will allow for additional information to be gathered and determine initial assessment route: Play, Synergetic, Traumaplay, Counselling, Autplay or EMDR



Stage 3

Assessment

This will be carried out with a therapist who specialises in modality identified during the Stage 2 consultation. Assessment will include: SDQ's, core assessments. Meeting with parents/carers, school and social care (as appropriate).



Stage 4

Clinical Reasoning Meeting

The assessment will then be discussed at the clinical Reasoning meeting to decide best delivery of support



Stage 5

Report issued to school

Contains advice regarding direct therapy required.

Speech & Language Therapy Services

The ability to communicate is an essential life skill for all children and young people and it underpins a child's social, emotional and educational development. Strong language and communication skills are linked to better outcomes for children and young people in school and beyond.

10% of all children have long term or persistent speech language and communication needs (SLCN) – the most prevalent special educational need identified by primary schools. The Children's Speech and Language Therapy Service is commissioned by the NHS and Worcestershire County Council to deliver services at a targeted and specialist level to children attending mainstream schools, working in partnership with the wider workforce to meet children's needs. Additional services from direct therapy to whole setting/school training and everything in between are available to be commissioned by schools to enhance their core service.

Example Interventions	Units	Pay as you go
Individual assessment & written report	10 units	£520
Programme of individual intervention, delivered by the therapist and support given to school staff	14 units per 6 session programme	£720
Programme of group intervention, delivered by the therapist and support given to school staff	14 units per 6 session programme	£720
Whole school audit and report including recommendations	Individually calculated (24 unit minimum for a one form entry)	
Whole school training – full-day	24 units	£1220
Whole school training – half-day	12 units	£620
Whole school training – 2 hour twilight	8 units	£420

Physical Disability Team

The Physical Disability (PD) Team support children with a physical disability (e.g. cerebral palsy, dystrophy, acquired brain injuries, tumours, arthritis, and hyper-mobility)This specialist teaching team is available to support mainstream schools and early years settings (transfer support onto further and higher education settings is also available). We recognise the importance of working collaboratively with colleagues in mainstream schools and health settings, parents/carers and children to:

- ◆ Enable children and young people with physical disabilities to be educated in mainstream schools wherever possible
- ◆ Provide appropriate support for children with physical disabilities, their Parents/Carers and school staff to achieve successful, inclusive education
- ◆ Offer advice and training to help maintain access to a full curriculum
- ◆ Complete specialist assessments
- ◆ Assist with all aspects of planning and implementing access for children with limited mobility, including building modifications

The PD Team support children through: school and pre-school visits, transition planning; contributing to Statutory Assessment; reviews, IEPs and programmes of work; advice on the development of inclusive teaching strategies; specialist assessments; intervention programmes; staff training; curriculum support; advice on specific environmental adaptations to promote inclusion; advising on special arrangements for examinations where appropriate; working with pupils to develop strategies for independent learning; Teaching Assistant support; inclusive technology; manual handling assessments.

Service delivery is **free across Worcestershire**, delivered on behalf of :



North Worcestershire: Chadsgrove School Support Services PD Team

South Worcestershire: Regency High School PD Team

Out of County/ Non Worcestershire Schools	Units	Pay as you go
Half day	5 units	£270
Full day	10 units	£520

Vision Impairment

The team is made up of specialist teachers (QTVI) who can identify and advise on resources and environmental adaptations to enhance inclusive practice and quality first teaching. The team can provide direct intervention, or work with teachers and teaching assistants to develop classroom management and independent learning approaches. The specialist team can also complete functional vision assessments onsite.

We have identified below a range of support available, however bespoke support and training to meet the specific needs of individual schools or groups of schools is also available.

	Units	Pay as you go
Subject Specialism—QTVI support for teaching and learning in the following subject areas: PSHE, Maths, Science, Music, IT, PE, Art, Languages, Humanities, English and Drama.	VF= 6 units WF = 7 units	VF = £320 WF = £370
Access Technology <ul style="list-style-type: none"> Ebraille—Braille readers and Braille Input (Half Day) Magnification and speech software (Half Day) 	VF = 4 units WF = 5 units	VF = £220 WF = £270
Braille/tactile learning <ul style="list-style-type: none"> Techniques for teaching Braille to Pupils with VI (Half Day) Producing tactile graphics (Half Day) 	VF = 4 units WF = 5 units	VF = £220 WF = £270
Accessibility support. Independent living and mobility	VF = 6 units WF = 7 units	VF = £320 WF = £370
Functional Vision Assessment	VF = 6 units WF = 7 units	VF = £320 WF = £370
VI accessibility audit of the school environment	VF = 6 units WF = 7 units	VF = £320 WF = £370
<i>‘VF VERBAL FEEDBACK’, ‘WF WRITTEN FEEDBACK’</i>		

SEND Review

The **SEND review** will support self evaluation and leadership of SEND within your school or setting. The review will identify strengths and provide advice regarding next steps to development. A SEND consultant will work alongside the SENCo and Leadership Team to audit existing provision and policy.

Support with implementation and modelling effective practice is available through our SENCo strategic support provision.

Review Elements

SEND Review package includes:

- ◆ SEN Information Report
- ◆ SEND Policy
- ◆ SEN Register
- ◆ Role of SENCO and Qualifications
- ◆ Effective Use of Funding
- ◆ Assessment/Target Setting/Progress
- ◆ Provision Map
- ◆ IEPs or equivalent
- ◆ Effective use of Additional Support
- ◆ Role of SEN Governor/Governing Body
- ◆ Staff Development
- ◆ Monitoring Learning of Pupils with SEND
- ◆ Parent and Pupil Voice
- ◆ Work Scrutiny
- ◆ Data Scrutiny

	Units	Pay as you go
Full-day	12 units	£620

SENco Strategic Support



SENCo Strategic Support offers guidance and advice for SENCOs in the progression, monitoring and evaluation of school systems and SEND policy. This may include support with effective data collection and tracking for children with SEND, monitoring the delivery of high quality differentiated teaching, and advice on supporting the identification of pupils with SEND and implementing appropriate interventions. Support can also be provided to help support and develop areas identified in a whole school SEND review.

	Units	Pay as you go
Half-day	6 units	£320
Full-day	12 units	£620

SpLD Quality Mark



The Chadsgrove School Support Services **Specific Learning Difficulties Quality Mark** offers a fantastic opportunity to work through a series of standards to develop your whole school approach to supporting learners with specific learning difficulties (SpLDs). You will be provided with a named consultant who, over an agreed timescale, will offer you bespoke support to evidence the standards in order to earn accreditation.

4 steps to success

The accreditation procedure has been designed to ensure accessibility and cost effectiveness for schools, whilst maintaining an evaluative robustness. Schools and settings are fully supported through the four step process through site visits, phone calls and email support.

	Units	Pay as you go
SpLD Quality Mark (steps 2-4)	18 Units	£920
Reaccreditation (every 3 years)	6 Units	£320

Please note Step 1 (Dyslexia Awareness) is charged separately, please see *Training and CPD* section of the directory.



Steps to accreditation

1



Completion of whole staff *Dyslexia Awareness Training* (training must have been delivered by CSSS prior to commencing the Quality Mark accreditation process).

2



A visit to your school/setting to explore the standards to audit current policy and practice and action plan next steps.

3



A mid-point visit to your school/setting to evaluate work towards achieving the standards in progress and offer support as required.

4



A final accreditation visit to your school/setting where evidence of meeting the standards will be viewed.

The Quality Mark accreditation is reviewed on a three year rolling programme.

The review consists of a revaluation of SpLD Quality Mark standards and how they are continuing to be embedded across your school/setting.



Training and CPD

	Half-day/2 hours twilight 7 units Pay as you go £370	Full-day 12 units Pay as you go £620
Effective classroom support		✓
Pre-phonics <i>skills and steps to learning sounds</i>	✓	
Multisensory Literacy		✓
Dyslexia Awareness	✓	
Dyspraxia Awareness	✓	
Introduction to ADHD	✓	
Introduction to Sensory Processing Disorder	✓	
Precision Teaching	✓	
Manual Handling	Up to 6 people	✓
	7-12 people	14 units Pay as you go £720
	13-18 people	17 units Pay as you go £870
Signalong introductory training (max 12 people)	5 units Pay as you go £270	
Engagement 4 Learning Awareness Training (1 hour)	4 units	



Training updates will be sent via service newsletters, course flyers, as well as being advertised via our social media



	Half-day/2 hours twilight 7 units Pay as you go £370	Full-day 12 units Pay as you go £620
Protective Behaviours	✓	
Zones of Regulation	✓	
Anxiety	✓	
General Mental Health	✓	
Awareness / Support or specific mental health difficulties	✓	
Sensory Processing Differences and Difficulties in school	✓	
Identifying, Observing and Supporting Children and Young people with Attachment and Trauma related difficulties		✓
The role of Key Adults in Schools – SLT Team Training	✓	
The role of Key Adults in Schools – Practitioner Training		✓
Using the Observational Checklist to establish need, inform planning and observe impact of support for Children and Young People with Attachment and Trauma related difficulties.	✓	
Training – Relationship Based Play		✓



Prices are based, unless stated, on a maximum number of 20 attendees. Additional attendees can be added, 1 unit or pay as you go £70 for up to 10 members of staff.

AET Training



Making Sense of Autism



This module is an awareness-raising module for all staff in a school community, whether they be teachers, learning support assistants, school meals supervisors, or taxi drivers. The module provides an introduction to autism and the reasonable adjustments that need to be considered when working with autistic pupils.

Good Autism Practice



This module is for practitioners who work with autistic pupils (5–16). It provides practitioners with practical strategies when working with autistic pupils. The module also takes participants through guidance on developing a pupil-centred education plan (PCEP) for an autistic pupil. Although only students with SEN are currently required to have a PCEP, the vision is that if, in the long term, inclusive practice is embedded in school provision, fewer pupils will require something additional to that which forms part of universal provision. Although not all staff who work with an autistic pupil will be involved in the creation of a pupil-centred education plan, all staff will benefit from being aware of the content of the PCEP.

Autism and Anxiety



This module will provide your staff with an understanding of what we mean by anxiety, how it appears to autistic pupils, what the key triggers are and what we can do to support our autistic pupils and prevent anxiety.

Autism Education Trust Training

The only DfE accredited autism training available in Worcestershire!

ONLY available via **Chadsgrove School Support Services CCN Team**

Making Sense of Autism

Gain a better understanding and awareness of autism and the way it affects children in schools.

Delivery Method	Time	Cost	Additional Delegate Places
Termly delivery at Chads Grove	2 hours	1 free place per school	1 units/£65 pay as you go*
Pre-recorded webinar	2 hours	FREE	N/A
Onsite delivery of MSA at a school	2 hours	14 units or £750 pay as you go up to 40 attendees	1 unit or £70 pay as you go, per additional 10 delegates
Parent Carer Group/Workshop Supporting parents to gain a better understanding and awareness of autism and the way it affects and impacts on their child's daily life.	2 hours	Schools who have received MSA and GAP training as a whole school: 4 units or £250 pay as you go Schools who have not received MSA or GAP as a whole school: 10 units or £550 pay as you go	Price is based on up to 40 parent carers

***OR** if the school commits to buying GAP delivery as a whole school – then and **additional 5 Free places for MSA** (on Chads Grove courses) will be made available. **Please note that the GAP booking will not be refundable once booked via this route**

Good Autism Practice

Gain practical knowledge and discover hands on tools and techniques to support autistic children in your setting.

Delivery Method	Time	Cost	Additional Delegate Places
Courses delivered termly at Chads Grove	4 hours	Per delegate 2 units or £120 pay as you go	2 units/£120 pay as you go
Onsite delivery of GAP at a school	4 hours	14 units or £750 pay as you go up to 40 attendees	1 unit or £70 pay as you go, per additional 10 delegates

Further AET training packages detailed overleaf.

Autism and Anxiety Module

Gain an understanding of what we mean by anxiety, how it appears to autistic pupils,

Delivery Method	Time	Cost	Additional Delegate Places
Courses delivered termly at Chads Grove	2 hours	Per delegate 1 unit or £65 pay as you go	1 unit or £65 per delegate
Onsite delivery of Autism & Anxiety Module at a school	2 hours	Price for schools who have received MSA and GAP training as a whole school: 7 units or £370 pay as you go <i>up to 40 attendees</i> Schools who have not received MSA or GAP: 10 units or £550 pay as you go, <i>up to 40 attendees</i>	1 unit or £70 pay as you go, per additional 10 delegates 1 unit or £70 pay as you go, per additional 10 delegates

MSA/GAP Combo Package

ONLY available when booked together

Once MSA training has been delivered the booking is no longer refundable.



Delivery Method	Time	Cost	Additional Delegate Places
Onsite delivery of MSA/GAP at a school	1x 2hrs 1x 4hrs	20 units or £1200 pay as you go <i>up to 40 attendees</i>	1 unit or £70 pay as you go, per additional 10 delegates

Full AET Package - MSA, GAP & Anxiety & Inclusion

Only available when booked together

Once MSA training has been delivered the booking is no longer refundable.



Delivery Method	Time	Cost	Additional Delegate Places
Onsite delivery of MSA/GAP/Anxiety and Inclusion at a school	1x 2hrs MSA 1x 4hrs GAP 1x 2hrs Anxiety 1x 2hrs Exclusions	35 units or £2000 pay as you go <i>up to 40 attendees</i>	1 unit or £70 pay as you go, per additional 10 delegates

Careers Advisory Team

A team of experienced and professionally qualified Career Advisers who are registered with the Career Development Institute, and accredited with the Matrix Quality Standard for Information, Advice and Guidance.

The team's aims are:

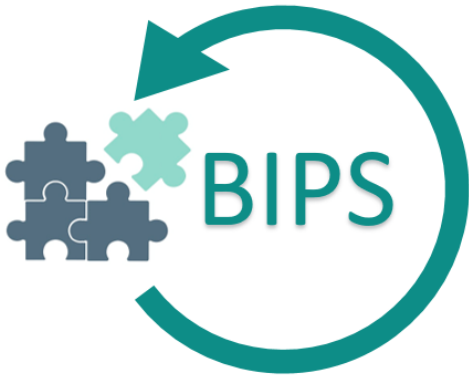
- To afford the school every support that is deemed necessary and desirable in the support of the students and those responsible for them
- To deliver effectively and rigorously careers information, advice and guidance to young people; to maximise their life opportunities by promoting and enhancing participation and inclusion
- To offer additional, intensive support to the more vulnerable young people. Our vision is to sustain these students within the school setting; to help them to participate in the development of strategies in order to achieve a positive outcome; and to ensure that all may become engaged with a variety of employment, education and training opportunities
- To provide a high quality service that is universal yet tailored to the individual, so that all the young people may achieve good outcomes and reach their full potential, recognising however, some young people will need more support as they make that transition.

The services we can provide include:

- Careers guidance interviews including a full action plan
- Group work - choose from a range of topics such as employability workshops, apprenticeships and occupational awareness
- Work with parents and carers at parents' evenings
- Drop in sessions
- Careers fair/employer events
- Careers, information and guidance training for your staff
- Tracking & follow up service that includes completion of your September Guarantee and Annual Activity returns and production of a Destination Report
- Specifically tailored Career Action Plans that link directly into Education, Health & Care Plans for your students with special educational needs
- Attendance at A Level and GCSE results day

	Units	Pay as you go
Half-day	4 units	£220
Full day	6 units	£320

Bitesize Inclusion Pedagogy Sessions (BIPS)



Our new BIPS provide short CPD sessions aimed at supporting and developing inclusive practice in the classroom. BIPS are delivered via short, 40 minute, webinars aimed at developing knowledge and providing strategies to the busy classroom practitioner.



Information regarding BIPS will be advertised via email and through our social media platforms:



@chadsupportteam



@chadsupportteam



@chadsupportteam

	Pay as you go
Price per person per session	£25



SpLD Practitioner Course

The SpLD and Neurodiversity Practitioner course is designed to give school staff a working knowledge of the different types of SpLD and other areas of neurodiversity. The course will cover: how the various differences present; how you can identify them; how you can support and when to refer.

The course will also introduce staff to standardised and non-standardised assessments and screeners, as well as developing knowledge around intervention (planning targeted support and delivery). The course will be delivered in a practical manner to ensure that delegates have the knowledge and strategies to utilise in their school/setting.

Commencing Autumn 2024

For further information please contact the Central Office Team
on 01527 877262



Purchasing School Support

We have specific separate order forms for pay-as-you-go services and for advance purchase of units.

These forms can be downloaded from the School Support Services section of the Chadsgrove website or email schoolsupportservices@chadsgrove.worcs.sch.uk

The image displays two order forms from Chadsgrove School Support Services. The 'Pay-as-you-go' Order Form is a structured table with fields for service details, school information, and contact details. The Units Order Form is a more complex form with sections for unit requirements, school details, and a discount table. A note on the Units Order Form states: 'Minimum Initial Purchase: 20 units = £2000. Additional units @ £10 per unit. 50+ units = 5% discount + finance of £150. 75+ units = 10% discount + finance of £300. 100+ units = 15% discount + finance of £450. 150+ units = 20% discount + finance of £600. 200+ units = 25% discount + finance of £750. 250+ units = 30% discount + finance of £900. 300+ units = 35% discount + finance of £1050. 350+ units = 40% discount + finance of £1200. 400+ units = 45% discount + finance of £1350. 450+ units = 50% discount + finance of £1500. 500+ units = 55% discount + finance of £1650. 550+ units = 60% discount + finance of £1800. 600+ units = 65% discount + finance of £1950. 650+ units = 70% discount + finance of £2100. 700+ units = 75% discount + finance of £2250. 750+ units = 80% discount + finance of £2400. 800+ units = 85% discount + finance of £2550. 850+ units = 90% discount + finance of £2700. 900+ units = 95% discount + finance of £2850. 950+ units = 100% discount + finance of £3000.' A note at the bottom of the Units Order Form states: '* Discount applied to single orders of 50 or more units. May be used by an individual school or across a Multi-Academy Trust. One unit has been purchased, we will maintain an invoice for the school in order to settle units with the school should require the relevant term's refund payments to the relevant PA. The payment should then be submitted to those relevant Lead Administrators on PA. The payment should then be submitted to those relevant Lead Administrators on PA.'

https://www.chadsgroveschool.org.uk/web/school_support_services

Pre-Purchased Unit Packages

Initial Purchase Minimum of 20 units

Discount packages

50+ units entitles you to a 5% discount*

** Discount applied to single orders of 50 or more units.*

May be used by an individual school or across a Multi-Academy Trust

Notes



Chadsgrove School Support Services

Meadow Road
Catshill, Bromsgrove
Worcestershire, B61 0JL

Tel: 01527 877262

Email: schoolsupportservices@chadsgrove.worcs.sch.uk

Website: https://www.chadsgroveschool.org.uk/web/school_support_services



@chadsupportteam



@chadsupportteam



@chadsupportteam